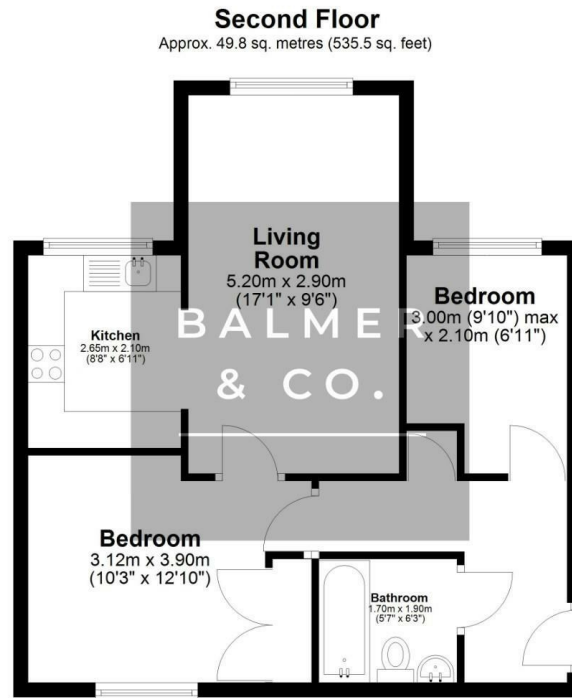


Brentwood Grove, Leigh, WN7 1UG  
£775 PCM



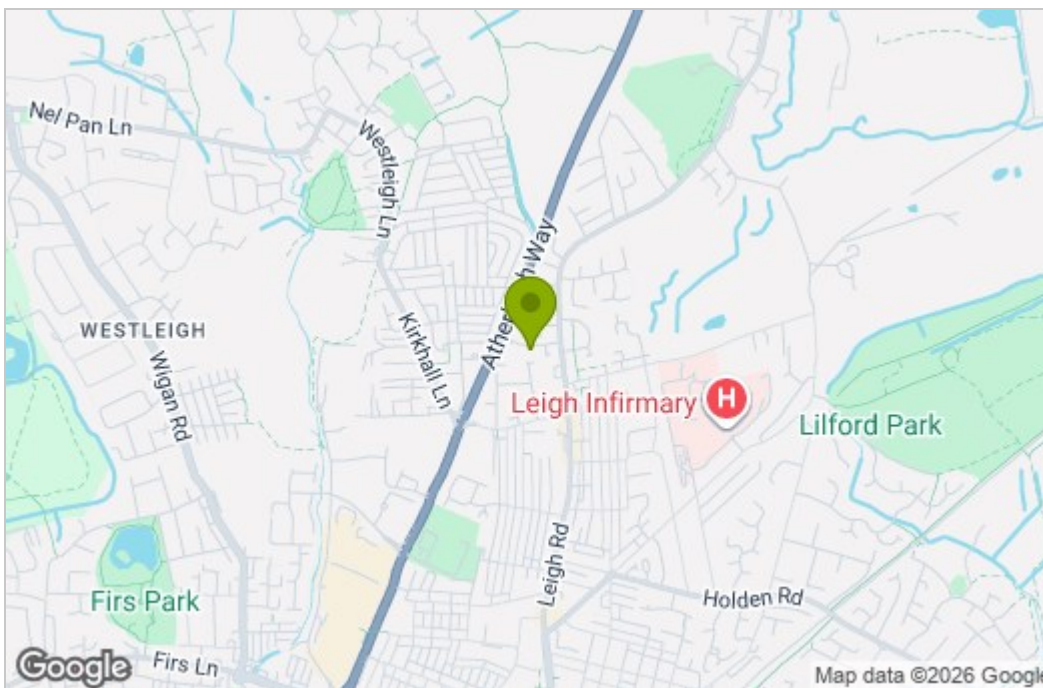
BALMER & CO are delighted to offer TO RENT this two bedroom purpose built apartment, available for immediate occupancy. Accommodation comprises in brief, communal entrance with secure intercom entry system, private entrance and hallway, living room, separate kitchen, two bedrooms and bathroom. Outside are communal gardens with allocated and visitor parking.

## Floor Plan

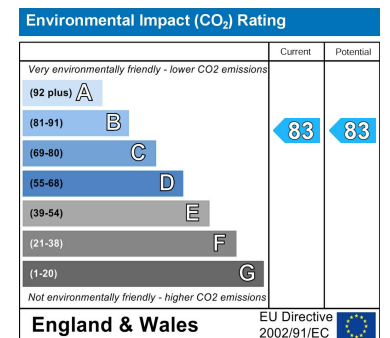
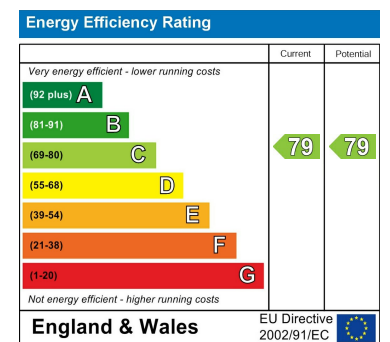


Total area: approx. 49.8 sq. metres (535.5 sq. feet)

## Area Map



## Energy Efficiency Graph



These particulars, whilst believed to be accurate are set out as a general outline only for guidance and do not constitute any part of an offer or contract. Intending purchasers should not rely on them as statements of representation of fact, but must satisfy themselves by inspection or otherwise as to their accuracy. No person in this firm's employment has the authority to make or give any representation or warranty in respect of the property.